

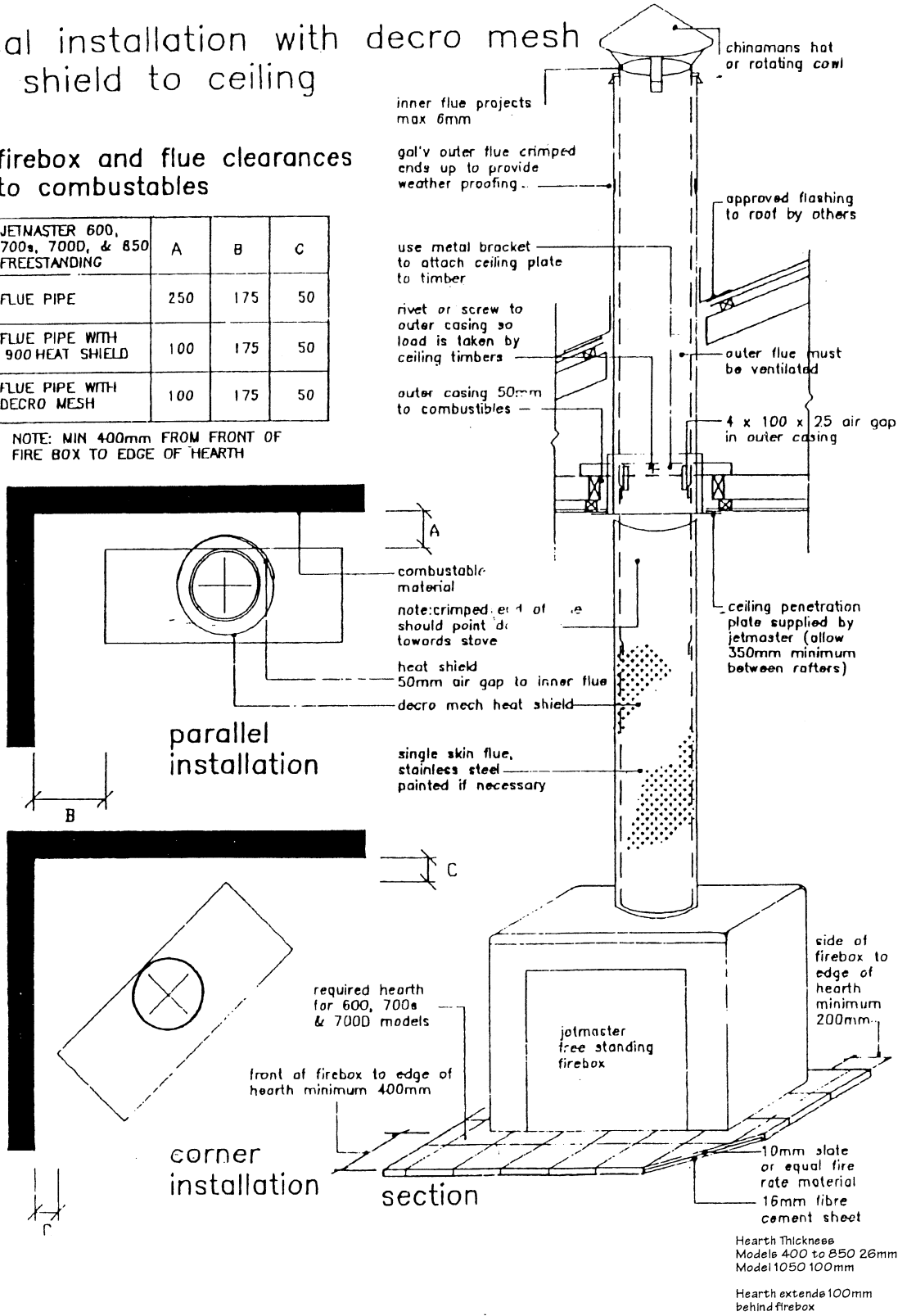
FREE STANDING METAL CASING "B"

typical installation with decro mesh heat shield to ceiling

firebox and flue clearances to combustibles

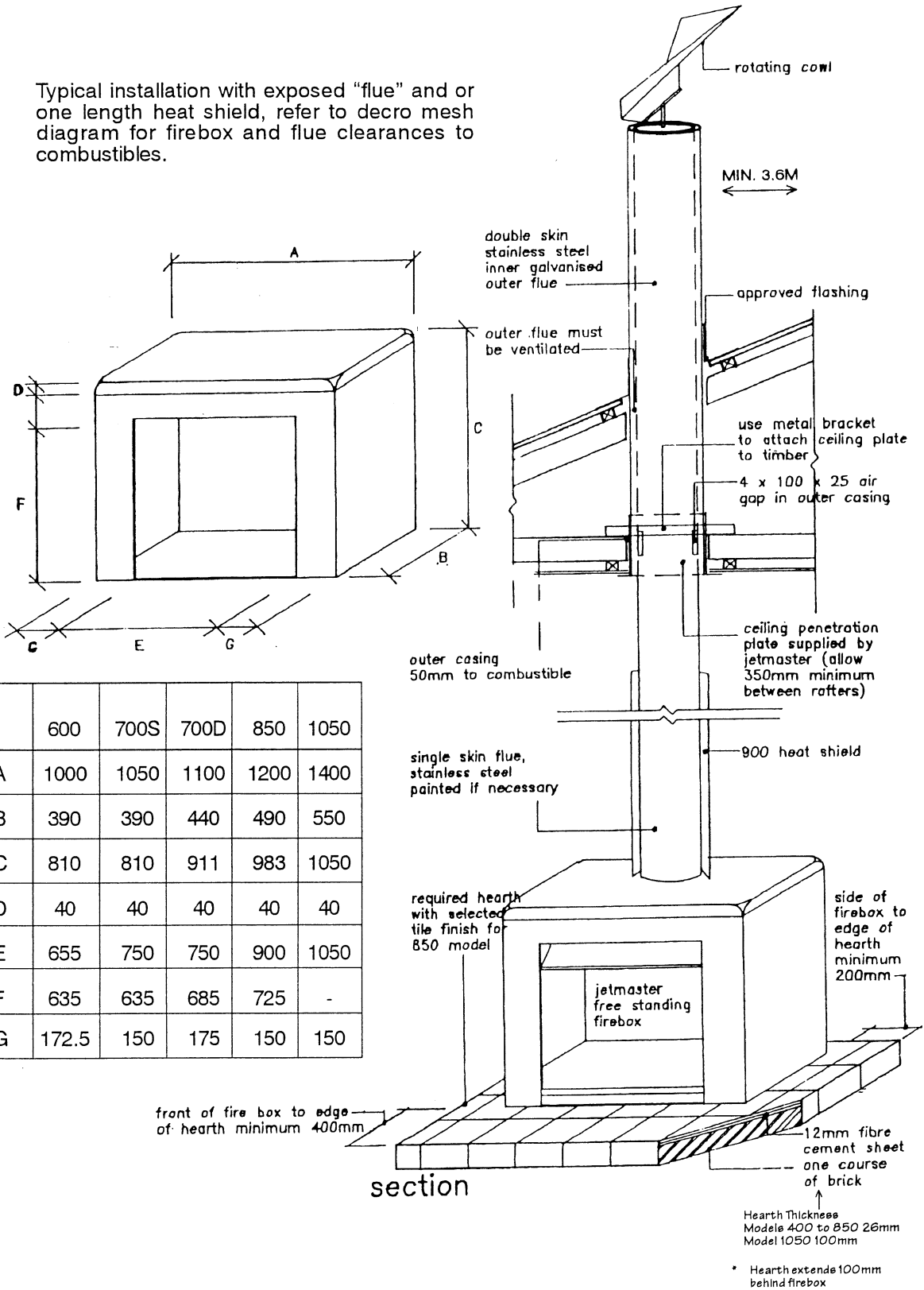
JETMASTER 600, 700s, 700D, & 850 FREESTANDING	A	B	C
FLUE PIPE	250	175	50
FLUE PIPE WITH 900 HEAT SHIELD	100	175	50
FLUE PIPE WITH DECRO MESH	100	175	50

NOTE: MIN 400mm FROM FRONT OF FIRE BOX TO EDGE OF HEARTH



FREE STANDING METAL CASING "A"

Typical installation with exposed "flue" and or one length heat shield, refer to decro mesh diagram for firebox and flue clearances to combustibles.



	600	700S	700D	850	1050
A	1000	1050	1100	1200	1400
B	390	390	440	490	550
C	810	810	911	983	1050
D	40	40	40	40	40
E	655	750	750	900	1050
F	635	635	685	725	-
G	172.5	150	175	150	150